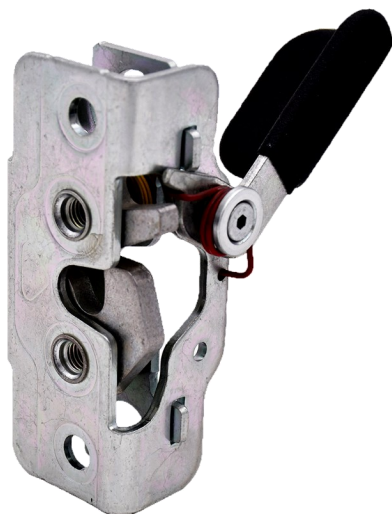


# 050-1910 8mm Single Rotor Latch - Single Position



TriMark's newest innovation in rotary latches features a robust modular design that offers extensive actuation locations and options providing application flexibility in a compact design. Designed for medium to heavy-duty applications for on or off-highway applications, this single position latch is designed for non FMVSS 206 (ECE R11) configurations.

## **DESIGNED FOR:**

- Applications where it is desirable to have a single position rotary latch
- Interior door thickness of 45-57mm (1.77-2.25"). Depending on the actuator type and location the overall height could be greater. Please contact TriMark for specific details.
- Medium to heavy duty doors of 23-81 kg (50 -175 lbs.) with maximum door seal pressure of 36 kg (80 lbs.)

## **Global Locations:**

**TriMark Corporation**  
500 Bailey Avenue  
P.O. Box 350  
New Hampton, Iowa 50659  
United States  
Tel: 641-394-3188  
Fax: 641-394-2392  
1-800-447-0343  
[www.trimarkcorp.com](http://www.trimarkcorp.com)

**TriMark Europe**  
Cedar Court  
Walker road  
Bardon Hill  
Coalville LE67 1TU  
United Kingdom  
Tel: +44(0)1530 512460  
Fax: +44(0)1530 512461  
[www.trimarkeu.com](http://www.trimarkeu.com)

**TriMark (Xuzhou)**  
Building A5 Jingwu Road  
Xuzhou Economic  
Development Zone  
Xuzhou, Jiangsu  
221004 PR China  
Tel: +86 516 8773 0018  
Fax: +86 516 8773 0058  
[www.trimarkcn.com](http://www.trimarkcn.com)



TriMark. Interactive. Product. Selector



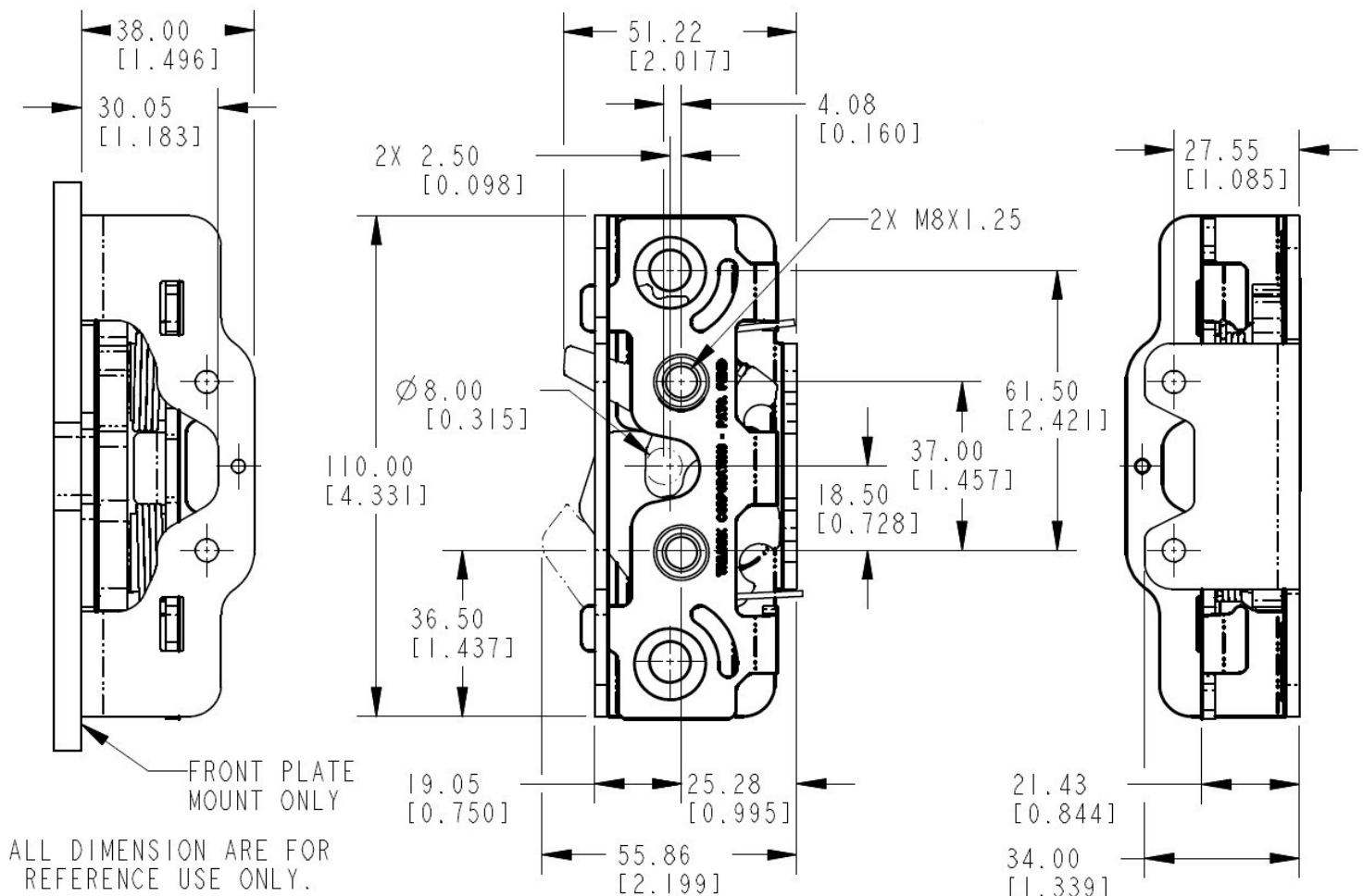
### FEATURES/BENEFITS:

- Modular case construction is preconfigured with multiple actuation points on the front case allowing top/bottom actuation including stacked actuators as well as combinations of actuation points providing the most configurable rotary door latch ever offered
- Compact size and shape allows maximum use of door space and minimizes visibility issues without compromising strength and robustness
- Rotor provides for vertical clearance of strike allowing for door sag, misalignment and ease of installation
- Single position version for compartment and door hold-open for non FMVSS 206 (ECE R11) applications
- 8mm diameter automotive style hoop-type strike minimizes clothing snag hazard

### AVAILABLE:

- In left or right hand configurations (right hand shown)
- Versions are available to allow direct actuation from exterior push button or pull handles and interior releases providing a simple, low cost and compact application
- Platform allows for reuse of TriMark's extensive selection of existing actuation levers reducing application engineering and tooling requirements
- Several actuator return spring options
- Coaxial actuator mechanism for applications where it is desirable to provide additional support to the actuation levers
- Innovative barrel release for ease of use/installation
- Future provisions for power release mechanisms and logic mechanism

For more information visit  
[www.trimarkcorp.com](http://www.trimarkcorp.com)



Base Latch Shown Without Actuators



# 050-1910 8mm Single Rotor Latch - Single Position

## MATERIAL:

- Case halves: high strength steel
- Rotor and catch: heat treated steel
- Springs: non-corrosive stainless steel

## FINISH:

- Zinc plated, clear chromate steel components

## INSTALLATION:

- Easy to install, mounts with (2) M8 x 1.25 class 8.8 or better fasteners are required (not included)
- Tighten to manufacturers' recommended torque value, however, do not exceed 26.0 N-m (230.1 in-lbs)

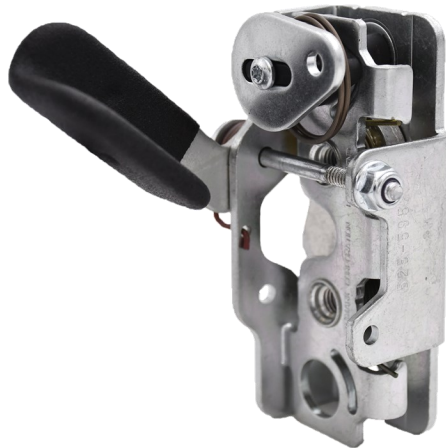
## USE WITH:

- TriMark 070-1000 8mm Hoop Strike
- TriMark 070-1300 Adjustable Striker

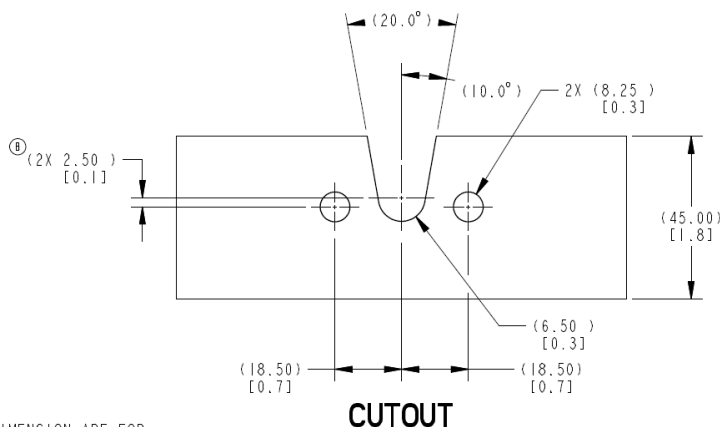
U.S. Patent Nos. 10,676,967 / 10,697,207

Individual part dimensions are for reference only. Refer to individual part drawings for complete dimensions, specifications, and installation procedures. Engineering assistance and application drawings are available.

**CAUTION:** Single position rotary latches do not comply with FMVSS 206 (ECE R11) requirements



Barrel Actuation With Direct Release Cam and Top Direct Release Actuator



CUTOUT

Mounting Details

ALL DIMENSION ARE FOR  
REFERENCE USE ONLY.

070-1000 8mm Hoop Strike



070-1300 Adjustable Striker



Modular construction with multiple actuation points allows top/bottom actuation including stacked actuators as well as combinations of actuation points.

